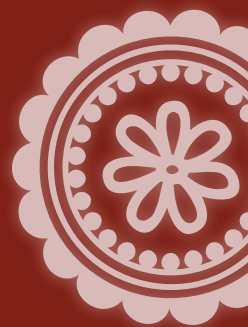
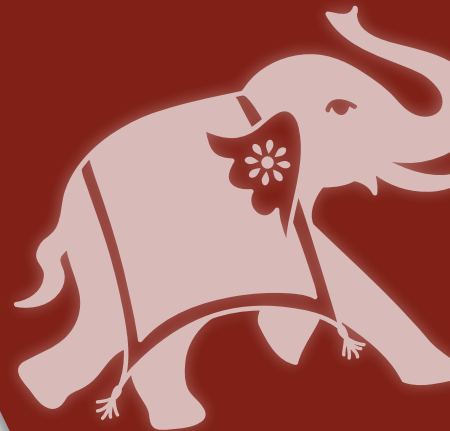


२०११ in kids youth expedition

DETAILS

i2P
impossible2Possible





The Thar Desert is known for three distinct regions, *the Thar* - with Sand dunes eclipsing 150 meters, *the plains*, and *the Aravalli range* - with peaks topping 1700 meters. The i2P Youth Ambassador team will run approximately 250 kilometers in this vast expanse near the northwestern edge of India, bordering on Pakistan.



i2P MISSION & VISION

The **mission** of impossible2Possible (i2P) is to use the platform of adventure and technology to educate, inspire, and empower the global community to reach beyond their perceived limits and make positive change in the world.

The **vision** of i2P is to cultivate a generation of leaders who, through direct experience, education and the use of groundbreaking technology, are prepared to pioneer social and environmental action throughout the world.

INDIAN YOUTH EXPEDITION: थार तैलडलर

In the fall of 2011 the impossible2Possible Youth Ambassador team will travel to Rajasthan, the largest state of the Republic of India. The 5th stage of the i2P World Expedition Series will spend 10 days running through the Thar Desert - also known as the "Great Indian Desert". It is the world's seventh largest and one of the most inhospitable deserts on the planet.

The i2P Youth Ambassador team will run approximately 300 kilometers in this vast expanse near the northwestern edge of India, bordering on Pakistan. The Thar Desert is known for three distinct regions, *the Thar* - with Sand dunes eclipsing 150 meters, *the plains*, and *the Aravalli range* - with peaks topping 1700 meters. This diverse and contrasting landscape will ensure that this i2P Youth expedition will be the toughest to date, and will require incredible preparation to ensure a successful expedition through this awe inspiring landscape.

The 2011 India Expedition will demonstrate once again why the i2P Education Resource program has been touted by Apple Distinguished Educators as truly, "21st Century learning," and "ground breaking". The i2P web-team will be utilizing streaming video during the expedition to allow students direct communication with the Youth Ambassador team as they traverse this varied and diverse eco-region.



i2P's Educational Coordinator, Dr. Ewan Affleck, will again team up with educators, scientists, and advisers to create a captivating curriculum centered on "World Health." The program will include a complete look at the sustainability of health care around the world, with a focus on the differences in health service in India, the United States and Canada. The experiential learning program has proven extremely successful for teachers and students alike.

The four i2P Youth Ambassadors will be the direct conduits of information back to thousands of students following intently from around the world. The four Youth Ambassadors will once again be the lead researchers for an experiential learning program like no other on the planet.

expedition info



Join 16,000+
Students &
Follow Along
FALL 2011

vimeo



As with all i2P **Experiential Learning Programs**, Expedition India will partner with some of the best organizations and experts with knowledge about the World Health theme of the expedition. In the case of Expedition India i2P will partner with hospitals, health agencies, and individual experts in the field of health and wellness.

WHY HEALTH? According to the United Nations health care is a human right. Yet millions around the world have no access to health service. Economies around the world are struggling to maintain health services. Sustainability of health service is an issue that affects all citizens of the world. North America is facing an obesity crisis, and we want to **encourage students to be active and healthy.**

WHY INDIA? India is home to one of the world's fastest growing economies and over a billion people - factors that greatly constrain its ability to offset deep contrasts in living standards. While India boasts some of the most advanced health facilities in the world. The Times of India estimated that nearly **one million Indians die** every year due to inadequate access to healthcare services. The massive population and great disparity in wealth accentuate most of the issues that threaten access to world health today.

PROJECTED PARTNERS*:

Hospitals:

- All India Institute of Medical Services (AIIMS);
- Jaipur Hospital; and
- Local medical clinics throughout Rajasthan and the Thar Desert.

Experts:

- Dr. Ewan Affleck - Medical Director, Yellowknife Health and Social Services; Clinical Director, Family Medicine at Stanton Territorial Hospital;
- Dr. Rahul Khosla - Emergency Medicine Specialist, Anesthetist, Certified Tropical Medicine;
- Dr. Greg Wells, Phd. Human Physiologist, Exercise Medicine Scientist, Toronto General Hospital;
- Dr. Shawn Cooper, DO, Pediatrician - Penn State Children's Hospital.

Agencies:

- World Health Organization;
- Centers for Disease Control and Prevention;
- Simon Fraser University; and
- UNESCO.

**Note: This is not an exhaustive list. More partners, experts and agencies will be confirmed shortly.*

“Simply amazing; the people; the place, the adventure have all changed me in infinitely positive ways. I will now live with increased confidence, heightened respect, and a new found love and enjoyment of the great world around me.

- Amanda Cobbs-Russell
i2P Youth Ambassador
Baffin Island Expedition, 2009

”



EXPEDITION FEATURES

SCIENCE OF THE RUN: Greg Wells, Ph.D. will investigate the influence of exercise on physiology and its effect on human health during the expedition. Also, during the expedition Dr. Wells will lead participating schools in projects such as Body Mass Index (comparing India with North America), and the education team will lead studies on the variation in world health costs and new innovations in technologies that improve access to health care.

Dr. Wells is a scientist and physiologist specializing in health and performance in extreme conditions. Most recently, Dr. Wells was the host of the Gemini Award winning "Superbodies" segments for Canada's national Olympic broadcast and the on camera sport science and sport medicine analyst for the CTV Broadcast Consortium, ABC News, and ABC's 20/20 during the 2010 Vancouver Olympics.

WEB BASED RESOURCE CENTER: impossible2Possible will build a *Resource Center* tailored to the i2P content. This *Resource Center* will act as a primary landing page for participating students and the wider interested audience. This informational access tool will allow the viewing audience an increased level of interaction with the expedition.



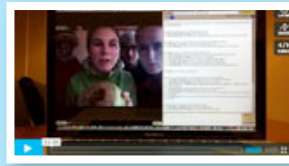
VIDEO/PHOTO JOURNALS



LIVE TRACKER



FACEBOOK/
TWITTER



LIVE VIDEO
CONFERENCING



EXTRAORDINARY
ACTS

EXPERIENCE THE EXPEDITION: A live and interactive website is the portal to every impossible2Possible Expedition! With each new project our dedicated team of volunteers works very hard to provide new and improved features. All content is free, and schools have access to all content at no charge- including live video conferencing during the i2P Expeditions. For weeks leading up to Expedition India, video, photos, social media and blogging will be updated daily. Every minute during the Expedition, Youth Ambassadors will film and photograph the Expedition from their perspective and everything they experience while on their journey.

This content is updated at least once a day (and sometimes) more on the i2P homepage, and partner sites like Outside Online and CNN will provide an update on the Expedition a handful of times during its duration.

APPLE EDUCATION: Since the early stages of i2P, Apple Distinguished Educators (ADE's) have played a key role in our Experiential Learning Programs. With their active participation and generous support everyone involved has experienced great success. For Expedition India, Apple Education and impossible2Possible have partnered in an extraordinary Challenge Based Learning project that will see participating students from around the world tackle the global issue of access to health care. The object is to see these motivated students come up with real world solutions to this real world issue.

" WORLD HEALTH "

CURRICULUM: Over the course of seven days the i2P expedition team will produce live webcasts from India that relate to specific world health themes (see below). These webcasts will be complemented by an interactive web-based education program.



INDIA: The Cradle - A primer on India and World Health.

1

POPULATION & HEALTH - How the population explosion is straining access to health care.

HEAL THYSELF - The impact of exercise and nutrition on improved health status.

3

UNEQUAL OPPORTUNITY - The impact of wealth and poverty on access to health care.

GOVERNANCE OF HEALTH - The manner in which different governments provide health care.

5

UNWANTED VARIATION - The efficiency of health services around the world.

HEALTH INFORMATION TECHNOLOGY - A look at the future of health care.

7



SCHOOL REGISTRATION NOW OPEN!

REGISTER YOUR SCHOOL AT:

<http://i2p.force.com/IndiaSchoolRegistration>

“

i2P provided a real-world connection to our curriculum learning that as a teacher you are always striving to create. We were able to apply what we were learning to the real world as we learned about it! Being part of the i2P community was enormously motivational and demonstrated to me and my class that anything is possible with determination!

- Shelley Stedman
MacLachlan College
Oakville, ON

”

“

Changing the way we educate our children begins with providing unique, real-world experiences in the classroom; Providing opportunities that our students can take ownership over, integrate technology and create meaningful projects. Southside Elementary's 5th grade students worked collaboratively to create podcasts which were aired on the local radio station, and technology to create posters to advertise their podcasts. Being able to witness the collaboration between our students and the i2P team brought everything to life. Thanks for the amazing experiences!

- Kathy Hobbs, Lisa Gault and Dan Wells
Southside Elementary School
Starke, FL

”

